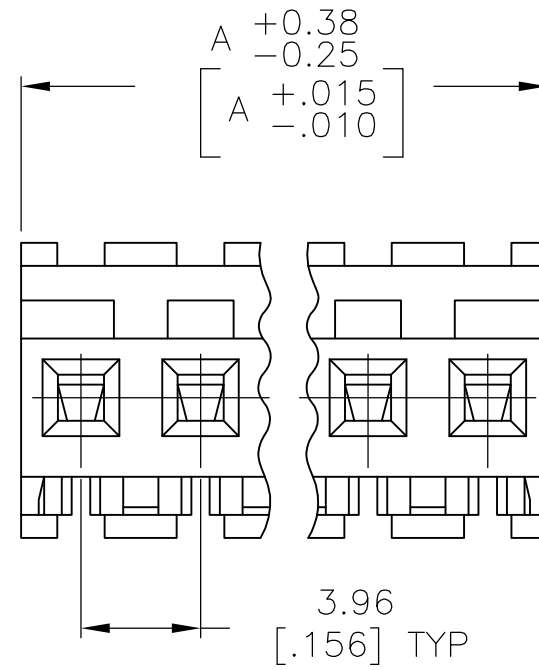
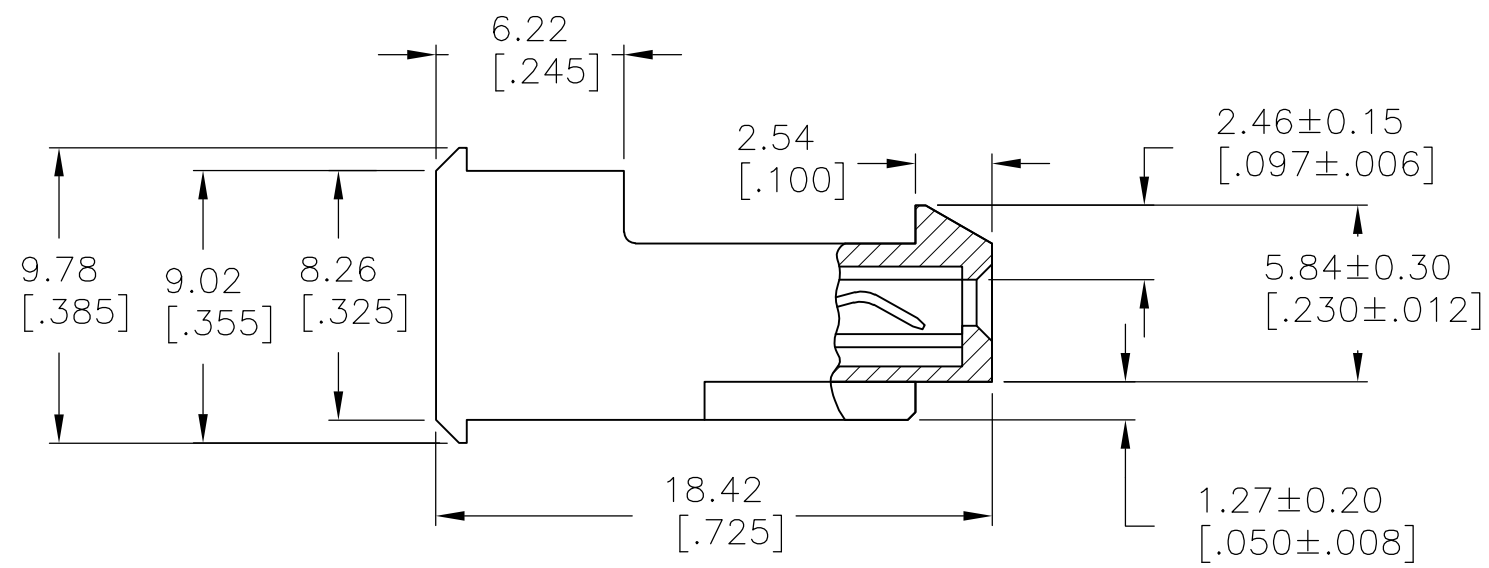
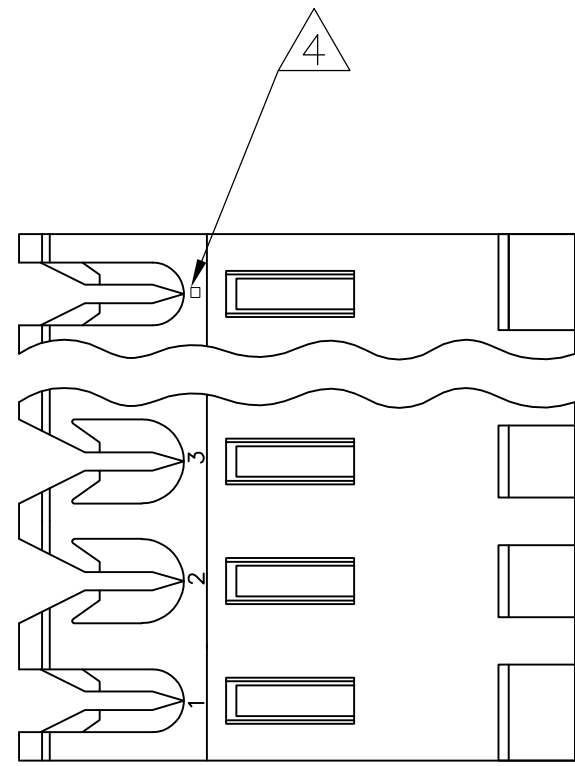


THIS DRAWING IS UNPUBLISHED. RELEASED FOR PUBLICATION
 © COPYRIGHT BY TYCO ELECTRONICS CORPORATION. ALL RIGHTS RESERVED.

LOC		DIST		REVISIONS			
P	LTR	DESCRIPTION		DATE	DWN	APVD	
	L	ECO-07-012872		15JUN07	KW	DB	



1 MATERIAL: CONNECTOR - NYLON UL94V-2 (YELLOW).
 CONTACTS - 0.00076 [.000030] GOLD IN CONTACT AREA WITH BRIGHT TIN-LEAD FOR 641228-2 THRU 2-641228-4, MATTE WHISKER MITIGATED TIN FOR 3-641228-2 THRU 5-641228-4 OVER NICKEL UNDERPLATE.

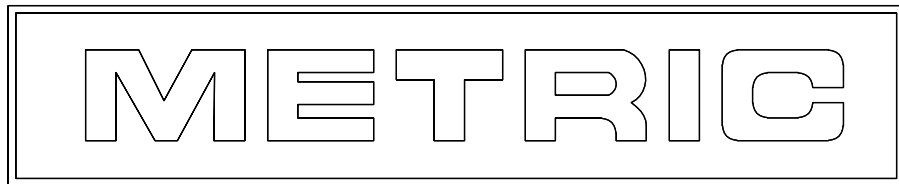
2. CONTACTS ACCEPT 20 AWG WIRE WITH 2.41 [.095] MAX INSULATION DIAMETER.

3. CONTACTS MUST ACCEPT 1.14±0.03 [.045±.001] SQUARE POST AND REMAIN LOCKED IN POSITION.

4 IDENTIFICATION NUMBER FOR LAST CIRCUIT MAY NOT APPEAR ON ALL ASSEMBLIES.

5. DIMENSIONS IN BRACKETS ARE IN INCHES.

6. HOUSING FEATURES ARE: FEED-THRU WITH LOCKING RAMP.



95.10	[3.744]	24	5-641228-4
91.14	[3.588]	23	5-641228-3
87.17	[3.432]	22	5-641228-2
83.21	[3.276]	21	5-641228-1
79.25	[3.120]	20	5-641228-0
75.29	[2.964]	19	4-641228-9
71.32	[2.808]	18	4-641228-8
67.36	[2.652]	17	4-641228-7
63.40	[2.496]	16	4-641228-6
59.44	[2.340]	15	4-641228-5
55.47	[2.184]	14	4-641228-4
51.51	[2.028]	13	4-641228-3
47.55	[1.872]	12	4-641228-2
43.59	[1.716]	11	4-641228-1
39.62	[1.560]	10	4-641228-0
35.66	[1.404]	9	3-641228-9
31.70	[1.248]	8	3-641228-8
27.74	[1.092]	7	3-641228-7
23.77	[.936]	6	3-641228-6
19.81	[.780]	5	3-641228-5
15.85	[.624]	4	3-641228-4
11.89	[.468]	3	3-641228-3
7.92	[.312]	2	3-641228-2
95.10	[3.744]	24	2-641228-4
91.14	[3.588]	23	2-641228-3
87.17	[3.432]	22	2-641228-2
83.21	[3.276]	21	2-641228-1
79.25	[3.120]	20	2-641228-0
75.29	[2.964]	19	1-641228-9
71.32	[2.808]	18	1-641228-8
67.36	[2.652]	17	1-641228-7
63.40	[2.496]	16	1-641228-6
59.44	[2.340]	15	1-641228-5
55.47	[2.184]	14	1-641228-4
51.51	[2.028]	13	1-641228-3
47.55	[1.872]	12	1-641228-2
43.59	[1.716]	11	1-641228-1
39.62	[1.560]	10	1-641228-0
35.66	[1.404]	9	641228-9
31.70	[1.248]	8	641228-8
27.74	[1.092]	7	641228-7
23.77	[.936]	6	641228-6
19.81	[.780]	5	641228-5
15.85	[.624]	4	641228-4
11.89	[.468]	3	641228-3
7.92	[.312]	2	641228-2
DIM A		NO OF CIRCUITS	PART NO

THIS DRAWING IS A CONTROLLED DOCUMENT.

DIMENSIONS: mm [INCHES]	TOLERANCES UNLESS OTHERWISE SPECIFIED:	DWN B. LEWIS 12 MAR 96	Tyco Electronics Corporation Harrisburg, Pa 17105-3608
		CHK R. SWING 12 MAR 96	
		APVD D. CLARK 12 MAR 96	NAME MTA-156 CONNECTOR ASSEMBLY, 20 AWG, STANDARD
		PRODUCT SPEC 108-1051	
		APPLICATION SPEC 114-1020	SIZE A2
MATERIAL	FINISH	WEIGHT	CAGE CODE 00779
			DRAWING NO C=641228
			RESTRICTED TO
		CUSTOMER DRAWING	SCALE 4:1 SHEET 1 OF 1 REV L